

PROFESSIONAL MANUFACTURER OF AUTOMOTIVE OFF-ROAD PRODUCT ACCESSORIES



With systematic precision forging to support customers expand, achieve staff's value and lead industry progress

Qingdao Kesheng Hongda Hardware Products Co., LTD

E-mail: info@qdkshd.com

Tel: +86 13070876125



Trailer Accessories

D Ring Shackle, Soft Shackle, Snatch Block, Shackle Hitch Receiver, Hitch Ball, Ball Mount, Pintle Hook, Tow Hook, Hitch Lock, Hitch Tightener, Recovery Board, Hitch Ball Coupler

MODEL:TKTC SHACKLE

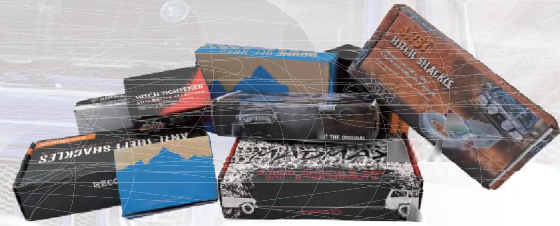
OEM&ODM

D Ring Shackle

TKTC-1001

D Ring Shackle finished by Forging, Surface can do Self color, Galvanized, Powder painted (Multiple colors). OEM / ODM acceptable

- Material: Body is carbon steel, Pin is alloy steel.
- Size: Body is 3/4", Pin is 7/8"
- W.L.L. is 4.75T with 28.5T Breaking Strength
- Application : Applicable to Off-road Trailer Rescue



Packaging can be customized



Weight-1.03kg/**G-209**



With Clamp spring
Weight-1.07kg/**G-209**



Weight-1.23kg/**G-2130**

OEM&ODM

Heavy Duty Shackle

TKTC-1002

D Ring Shackle finished by Forging, Surface can do Self color, Galvanized, Powder painted (Multiple colors). OEM / ODM acceptable

- Application : Applicable to Off-road Trailer Rescue



TKTC-1002-001
8T Heavy Duty Bow Shackle

- Material: Body is carbon steel, Pin is alloy steel.
- Weight-1.36kg
- Size: Body is 3/4", Pin is 7/8"
- W.L.L. is 4.75T with 28.5T Breaking Strength



TKTC-1002-001
8T Heavy Duty D Shackle

- Material: Body is carbon steel, Pin is alloy steel.
- Weight-1.37kg
- Size: Body is 3/4", Pin is 7/8"
- W.L.L. is 4.75T with 28.5T Breaking Strength



MODEL:TKTC SHACKLE

OEM&ODM

Heavy Duty Anti Theft Shackle

TKTC-1003

Anti Theft Shackle finished by Forging, Surface can do Self color, Galvanized, Powder painted (Multiple colors). OEM / ODM acceptable

• Application : Applicable to Off-road Trailer Rescue.



Anti theft shackle with special key



TKTC-1003-001

8T Anti Theft Bow Shackle

- Material: Body is carbon steel, Pin is alloy steel.
- Weight:1.25kg
- Size:Body is customized, Pin is 7/8"
- W.L.L. is 8T with 32T Breaking Strength



TKTC-1003-002

Customized 10T Anti Theft Shackle

- Material: Body is carbon steel, Pin is alloy steel.
- Weight:1.52kg
- Size:Body is customized, Pin is 7/8"
- W.L.L. is 10T with 40T Breaking Strength



TKTC-1003-003

Customized 10T Anti Theft Shackle

- Material: Body is carbon steel, Pin is alloy steel.
- Weight:1.44kg
- Size:Body is customized, Pin is 7/8"
- W.L.L. is 10T with 40T Breaking Strength



TKTC-1003-004

Aluminum Alloy 5T Anti Theft Shackle

- Material: Aluminum Alloy 6061
- Weight:1.25kg
- Size:Body is customized, Pin is 7/8"
- W.L.L. is 8T with 32T Breaking Strength

OEM&ODM

Shackle Series

TKTC-1004

Shackle finished by Forging, Surface can do Self color, Galvanized, Powder painted (Multiple colors). OEM / ODM acceptable

• Application : Applicable to Off-road Trailer Rescue.



TKTC-1004-001

Customized 8T Shackle

- Material: Body is carbon steel, Pin is alloy steel.
- Weight: 0.44kg
- Size: Body is customized, Pin is 5/8"
- W.L.L. is 3.5T with 15T Breaking Strength



TKTC-1004-002

Customized 9T Heavy Duty Shackle

- Material: Alloy Steel
- Weight: 1.5kg
- Size: Body is customized, Pin is 7/8"
- W.L.L. is 9T with 46T Breaking Strength



TKTC-1004-003

Customized 12T Heavy Duty Shackle

- Material: Body is carbon steel, Pin is alloy steel.
- Weight: 3.32kg
- Size:Body is customized, Pin is 1-1/2"
- W.L.L. is 12T with 60T Breaking Strength



TKTC-1004-004

Customized 8T Shackle with clip

- Material: Body is carbon steel, Pin is alloy steel.
- Weight: 1.58kg
- Size:Body is customized, Pin is 7/8"
- W.L.L. is 8T with 32T Breaking Strength



TKTC-1004-005

Customized 10T Shackle

- Material: Body is carbon steel, Pin is alloy steel.
- Weight: 1.3kg
- Size:Body is customized, Pin is 7/8"
- W.L.L. is 10T with 40T Breaking Strength

MODEL:TKTC SHACKLE

OEM&ODM

Shackle Series

TKTC-1005

Shackle finished by Forging, Surface can do Self color, Galvanized, Powder painted (Multiple colors). OEM / ODM acceptable

- Application : Applicable to Off-road Trailer Rescue.



TKTC-1005-001 Customized 8T Shackle

- Material: Body is carbon steel, Pin is alloy steel.
- Weight: 1.1kg
- Size: Body is customized, Pin is 7/8"
- W.L.L. is 8T with 32T Breaking Strength



TKTC-1005-002 Customized 9T Shackle

- Material: Body is carbon steel, Pin is alloy steel.
- Weight: 1.15kg
- Size:Body is customized, Pin is 7/8"
- W.L.L. is 8T with 32T Breaking Strength



TKTC-1005-003 Customized 2.5T Shackle

- Material: Body is carbon steel, Pin is alloy steel.
- Weight: 0.33kg
- Size:Body is customized, Pin is 5/8"
- W.L.L. is 2.5T with 10T Breaking Strength



TKTC-1005-004 Customized 8T Horseshoe Shackle

- Material: Body is carbon steel, Pin is alloy steel.
- Weight: 1.3kg
- Size:Body is customized, Pin is 7/8"
- W.L.L. is 8T with 32T Breaking Strength



TKTC-1005-005 Customized 8T Horseshoe Shackle

- Material: Body is carbon steel, Pin is alloy steel.
- Weight: 1.3kg
- Size:Body is customized, Pin is 7/8"
- W.L.L. is 8T with 32T Breaking Strength

NEW PRODUCTS IN 2023

SUPPORT CUSTOMIZATION

Shackle finished by Forging, Surface can do Self color,Galvanized, Powder painted (Multiple colors) OEM / ODM Acceptable

- Application : Applicable to Off-road Trailer Rescue
- Material: Body is carbon steel, Pin is alloy steel.
- Customized version for display only, not for sale
- Process: Forging
- Surface: Powder Painted (Colors can be customized)

TKTC-1005B-001



TKTC-1005B-002



TKTC-1005B-003



TKTC-1005B-004



Tinkwell is specialized in the design and production of trailer accessories. It has a team of professional and experienced technicians who can provide customers with high-quality and innovative products.

MODEL:TKTC SHACKLE

OEM&ODM

Soft Shackle

TKTC-1006



The soft shackle finished by 100% High molecular polyethylene; Sleeve: Polyester / woven polyester; The soft shackle's color and logo on sleeve can be customized

- Application : Applicable to Off-road Trailer Rescue.
- The appearance and color can be customized

Accept OEM/ODM

Size (mm)	Length (inch)	W.B.S(T)	Weight (kg)
9	6	11.08	0.12
10	6	14.54	0.15
11	6	15.36	0.2
12	6	18.94	0.22
13	6	21.99	0.25
14	6	24.89	0.3



Trailer Accessories

OEM&ODM

Anti Falling Customized Shackle

TKTC-1007

Shackle finished by Forging, Surface can do Self color, Galvanized, Powder painted (Multiple colors). OEM / ODM acceptable



TKTC-1007-001

Anti Falling Customized Shackle

- Material: Body is carbon steel, Pin is alloy steel.
- Weight: 0.17kg
- W.L.L is 1T with 5T Breaking Strength

The appearance and color can be customized



OEM&ODM

Shackle Isolator & Washer

TKTC-1008

Use PU to production and finished by injection molding. Product appearance and color can be customized

- Application : Applicable to Off-road Trailer Rescue.
- The appearance and color can be customized

• Washer thickness-1.5/2/3/5mm



MODEL:TKTC SNATCH BLOCK

OEM&ODM

Stamping Snatch Block TKTC-1009

Stamping Snatch Block finished by stamping, Surface can do Self color, Galvanized, Powder painted (Multiple colors). OEM ODM acceptable

- Application : Applicable to Off-road Trailer Rescue,
- The appearance and color can be customized

NEW PRODUCTS IN 2023

Zip Line Cable Trolley

TKTC-2023HL-0072



- Material: Aluminium Alloy
- Size: 106(L)*81(W)*29.5(H)
- Winch Ring :Stainless Steel
- Accept OEM/ODM



TKTC-1009-001
4T Stamping Snatch Block

- Material: Carbon Steel
- Weight: 0.92kg
- Max Load: 4T
- Applicable wire rope: Φ 6-10mm



TKTC-1009-002
8T/10T Stamping Snatch Block

- Material: Carbon Steel
- Weight: 8T(2.6kg),10T(3.43kg)
- Max Load: 8T/ 10T
- Applicable wire rope: Φ 10-14mm



TKTC-1009-003
11T Stamping Snatch Block

- Material: Carbon Steel
- Weight: 2.66kg
- Max Load: 11T
- Applicable wire rope: Φ 8-12mm



TKTC-1009-004
Stamping Stainless Steel Snatch Block

- Material: 304SS
- Weight: 2.83kg
- Max Load: 10T
- Applicable wire rope: Φ 8-12mm

OEM&ODM

Forged Snatch Block TKTC-1010

Forged Snatch Block finished by forging+CNC, Surface can do Self color, Galvanized, Powder painted (Multiple colors). OEM / ODM acceptable

- Application : Applicable to Off-road Trailer Rescue,
- The appearance and color can be customized

TKTC-1010-001(DISPLAY ONLY)

6T/15T Customized Forged Snatch Block

- Material: Carbon Steel
- Weight: 6T(1.2kg); 15T(3.1kg)
- Applicable wire rope: 6T(Φ 6-10mm), 15T(Φ 8-14mm)



TKTC-1010-002(DISPLAY ONLY)
6T/12T Customized Forged Snatch Block

- Material: Carbon Steel
- Weight:6T(1.1kg); 12T(2.82kg)
- Surface: Electrophoretic Black+ Powder Painted



TKTC-1010-003
12T Customized Forged Snatch Block

- Material: Carbon Steel
- Weight: 3.1kg
- Breaking Strength: 24T
- Applicable wire rope: Φ 8-14mm



TKTC-1010-004(DISPLAY ONLY)
15T Customized Forged Snatch Block

- Material: Carbon Steel
- Weight: 2.8kg
- Breaking Strength: 24T
- Applicable wire rope: Φ 8-14mm



TKTC-1010-005(DISPLAY ONLY)
Customized Forged Snatch Block

- Material: Carbon Steel
- Weight: 5T(0.98kg); 12T(2.59kg); 18T(7.23kg)
- Surface: Electrophoretic Black+ Powder Painted

MODEL:TKTC HITCH RECEIVER

OEM&ODM

Aluminum Snatch Block

TKTC-1011

Aluminum Snatch Block finished by forging+CNC, Surface can do Self color, Anodic oxidation, Powder painted (Multiple colors). OEM / ODM acceptable

- Application : Applicable to Off-road Trailer Rescue.
- The appearance and color can be customized



TKTC-1011-001(DISPLAY ONLY)
10T Aluminum Snatch Block

- Material: Aluminum Alloy 6061
- Weight: 1.37kg
- Applicable wire rope: Φ 9-13mm
- Surface: Powder Painted



TKTC-1011-002
8T Snatch Recovery Ring

- Material: Aluminum Alloy 6061
- Weight: 0.43kg
- Process: CNC
- Surface: Anodic oxidation



TKTC-1011-003
10T Snatch Recovery Ring

- Material: Aluminum Alloy 6061
- Weight: 0.62kg
- Process: CNC
- Surface: Anodic oxidation



TKTC-1011-004
10T Snatch Recovery Ring

- Material: Aluminum Alloy
- Weight: 0.325kg
- Process: CNC
- Size: 3.8*1.18(inch)

OEM&ODM

Carbon Steel Shackle Hitch Receiver

TKTC-1012

Shackle Hitch Receiver finished by forging+CNC, Surface can do Self color, Zinc Plating, Powder painted (Multiple colors). OEM / ODM acceptable

- Application : Applicable to Off-road Trailer Rescue.
- The appearance and color can be customized



TKTC-1012-001
30*30mm Shackle Hitch Receiver

- Material: Carbon Steel
- Weight: 0.91kg
- Size:30*30*145mm
- W.L.L.:2T
- Surface: Powder Painted



TKTC-1012-002
50*50mm Shackle Hitch Receiver

- Material: Carbon Steel
- Weight: 2.23kg
- Size:50*50*160mm
- W.L.L.:4.75T
- Surface: Powder Painted



TKTC-1012-003
64*64mm Customized Shackle Hitch Receiver

- Material: Carbon Steel
- Weight: 2.29kg
- Size:63*63*240mm
- W.L.L.:4.75T
- Surface: ZincPlating/Powder Painted



TKTC-1012-004
50*50cm Customized Shackle Hitch Receiver

- Material: Carbon Steel
- Weight: 2.29kg
- Size:50*50*160mm
- W.L.L.:5T
- Surface: ZincPlating/Powder Painted



TKTC-1012-005
64*64mm Customized Shackle Hitch Receiver

- Material: Carbon Steel
- Weight: 4.68kg
- Size: 63*63*205mm
- W.L.L.:10 T
- Surface: ZincPlating/Powder Painted

MODEL:TKTC TRAILER ACCESSORIES

OEM&ODM

Aluminum Shackle Hitch Receiver

TKTC-1013

Shackle Hitch Receiver finished by forging+CNC, Surface can do Self color, Anodic oxidation, Powder painted (Multiple colors). OEM / ODM acceptable

- Application : Applicable to Off-road Trailer Rescue.
- The appearance and color can be customized



TKTC-1013-002 50*50mm Aluminum Shackle Hitch Receiver

- Material: Aluminum Alloy 6061
- Weight: 0.85kg
- Size:50*50*160mm
- W.L.L. is 8T with 16T Breaking Strength
- Surface: Powder Painted or Anodic oxidation

TKTC-1013-003(DISPLAY ONLY) 50*50cm Customized Aluminum Shackle Hitch Receiver

- Material: Aluminum Alloy 6061
- Weight: 1.01kg
- Size:50*50*190mm
- W.L.L. is 5T with 15T Breaking Strength
- Surface: Powder Painted or Anodic oxidation

TKTC-1013-004(DISPLAY ONLY) Customized Aluminum Shackle Hitch Receiver

- Material: Aluminum Alloy 6061
- Weight: 0.73kg
- Size: 50*50*155mm
- W.L.L. is 5T with 15T Breaking Strength
- Surface: Powder Painted or Anodic oxidation

TKTC-1013-001 Chrome Shackle Hitch Receiver

- Material: Carbon Steel
- Weight: 3.3kg
- W.L.L.: 4.75 T
- Surface: Polishing+ Chrome

OEM&ODM

Hitch Ball

TKTC-1014

Hitch Ball finished by forging+CNC, Surface is Chrome plating. OEM / ODM acceptable

- Application : Applicable to Off-road Trailer Rescue.
- Material:carbon steel/40Cr



Part NO.	Ball Dia	Shank Dia	Shank Length	Capacity	Finish	Part NO.	Ball Dia	Shank Dia	Shank Length	Capacity	Finish	
TKTC-1014-001	1-7/8"	3/4"	1-1/2"	2000lbs	Chrome,zinc, Black Nickel, Stainless Steel	TKTC-1014-014	2"	3/4"	3-3/8"	3500lbs	Chrome,zinc, Black Nickel, Stainless Steel	
TKTC-1014-002	1-7/8"	3/4"	2"	2000lbs		TKTC-1014-015	2"	1"	2"	6000lbs		
TKTC-1014-003	1-7/8"	3/4"	2-3/8"	2000lbs		TKTC-1014-016	2"	1"	2-3/4"	6000lbs		
TKTC-1014-004	1-7/8"	3/4"	3-3/8"	2000lbs		TKTC-1014-017	2"	1"	3"	6000lbs		
TKTC-1014-005	1-7/8"	1"	2"	3500lbs		TKTC-1014-018	2"	1"	3-3/8"	6000lbs		
TKTC-1014-006	1-7/8"	1"	2-1/8"	3500lbs		TKTC-1014-019	2-5/16"	1"	2"	6000lbs		
TKTC-1014-007	1-7/8"	1"	2-1/2"	3500lbs		TKTC-1014-020	2-5/16"	1"	2-1/2"	6000lbs		
TKTC-1014-008	1-7/8"	1"	3"	3500lbs		TKTC-1014-021	2-5/16"	1-1/4"	2"	12000lbs		
TKTC-1014-009	1-7/8"	1"	3-3/8"	3500lbs		TKTC-1014-022	2-5/16"	1-1/4"	2-1/2"	12000lbs		
TKTC-1014-010	2"	3/4"	1-1/2"	3500lbs		TKTC-1014-023	2-5/16"	1-1/4"	3"	12000lbs		
TKTC-1014-011	2"	3/4"	2"	3500lbs		TKTC-1014-024	50mm	7/8"	60mm	3.5t		Chorme, Zinc Plated
TKTC-1014-012	2"	3/4"	2-3/8"	3500lbs		TKTC-1014-025	50mm	7/8"	70mm	3.5t		
TKTC-1014-013	2"	3/4"	3"	3500lbs		TKTC-1014-026	50mm	1"	2"	3.5t		

MODEL:TKTC TRAILER ACCESSORIES

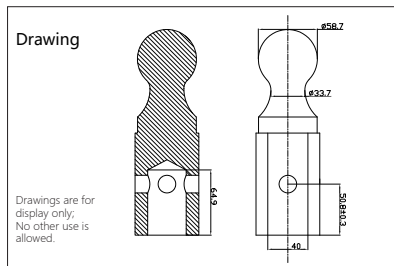
NEW PRODUCTS IN 2023 SUPPORT CUSTOMIZATION

Gooseneck Hitch Ball TKTC-1014B-001

OEM&ODM



- Process: Forging-CNC
- Material: Carbon steel
- Surface Treatment: Chrome
- Ball: 2-5/16" W.L.L.:38000LBS

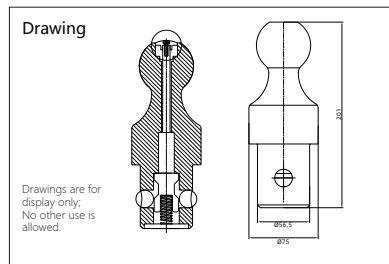


Gooseneck Hitch Ball TKTC-1014B-002

OEM&ODM



- Process: Forging-CNC
- Material: Carbon steel
- Surface Treatment: Chrome
- Ball: 2-5/16" W.L.L.:38000LBS



Available accessories TKTC-1014B-003

OEM&ODM



- Process: Forging
- Material: Carbon steel
- Surface: Powder Painted (Color customizable)
- If needed, please purchase as needed



NEW PRODUCTS IN 2023 SUPPORT CUSTOMIZATION

TKTC-1014C-005 Hitch Tube Cover



- Weight: 0.07kg
- Size: Suit for 2" Hitch Tube
- Size: 50*50*60mm
- Material: TPU
- Logo can be customized

TKTC-1014C-006 Hitch Tube Cover



- Weight: 0.07kg
- Size: Suit for 2" Hitch Tube
- Size: 50*50*60mm
- Material: TPU
- Logo can be customized

TKTC-1014C-007 Hitch Tube Cover



- Weight: 0.45kg
- Size: Suit for 2" Hitch Tube
- Size: 50*50*90mm
- Material: 45# Carbon steel
- Logo can be customized

TKTC-1014C-008 Hitch Tube Cover



- Weight: 0.123kg
- Size: Suit for 2" Hitch Tube
- Size: 50*50*60mm
- Material: TPU
- Logo can be customized

MODEL:TKTC Standard Mount

OEM&ODM

Standard Mount

TKTC-1015

Standard mount finished by Stamping+ Welding, Surface finished by Powder painted, Powder painted (Multiple colors). OEM / ODM acceptable

- Application : Applicable to Off-road Trailer Rescue.
- The appearance and color can be customized



TKTC-1015-002 2" Hollow Hitch Ball Mount

- Material: Carbon Steel
- Surface: Powder Painted
- Ball hole dia: 1"
- OEM / ODM acceptable



TKTC-1015-001 2" Forged Tow Hook

- Material: Carbon Steel
- Max Load: 10000LBS
- Surface: Powder Painted/ Zinc plating+ Powder Painted



TKTC-1015-003 2" Solid Forged Hitch Ball Mount

- Material: Carbon Steel
- Surface: Powder Painted
- Ball hole dia: 1-1/4"
- OEM / ODM acceptable

Max Drop (in)	Max Rise (in)	Length (in)	Max Capacity (lbs)
2	3/4	9	6000
3	2	7-7/8	6000
4	2-3/4	8-1/4	6000
5	3-3/4	9	5000
6	4-3/4	9-1/2	5000
8	6-3/4	10	5000

Max Drop (in)	Max Rise (in)	Length (in)	Max Capacity (lbs)
2	1	8-1/2	10000
3	3	9-1/4	10000
4	5	10-1/4	10000



OEM&ODM

Hitch Ball Mount

TKTC-1016

Hitch ball mount finished by Stamping+ Welding, Surface finished by Powder painted, Powder painted (Multiple colors). OEM / ODM acceptable

- Application : Applicable to Off-road Trailer Rescue.
- The appearance and color can be customized



TKTC-1016-002 Welder Ball Mounts

- Drop:2"
- Rise:3/4"
- Length: 9"
- Max Capacity: 3500LBS (1-7/8" Hitch Ball); 6000LBS (2" Hitch Ball)



TKTC-1016-003 Dual Ball Mounts

- Drop:2"
- Length: 8-1/4"
- Hitch Ball Size:1-7/8" & 2" or 2" &2-5/16"
- Max Capacity:6000LBS



TKTC-1016-001 Hitch Ball Mount with Hitch Ball

- Max Capacity: 6000lbs
- Ball Size: 2" *1" *2"
- Hitch Pin Size: 5/8"
- Drop: 2" or 3"
- Suit for 2" Hitch Tube



TKTC-1016-004 Tri Ball Mount

- Length: 12"
- Shank: Hollow/ Solid
- Max Capacity: 3500LBS (1-7/8" Hitch Ball); 6000LBS (2" Hitch Ball); 10000LBS (2-5/16" Hitch Ball)



TKTC-1016-005 Tri Ball Mount with Hook

- Length: 12"
- Shank: Hollow/ Solid
- Max Capacity: 3500LBS (1-7/8" Hitch Ball); 6000LBS (2" Hitch Ball); 10000LBS (2-5/16" Hitch Ball)

MODEL:TKTC TRAILER ACCESSORIES

NEW PRODUCTS IN 2023 SUPPORT CUSTOMIZATION

Trailer Hitch Tri Ball Mount and 360 Swivel Tow Shackle

TKTC-2023B-001

OEM&ODM



- Process:Welding-CNC
- Material:Carbon steel
- Surface Treatment:Powder coated
- Ball Size/W.LL: 1-7/8" 3500LBS 2" 5000LBS 2-5/16" 10000LBS



Trailer Hitch Tri Ball Mount and 360 Swivel Tow Shackle

TKTC-2023B-002

OEM&ODM



- Process:Welding-CNC
- Material:Carbon steel
- Surface Treatment:Powder coated
- Ball Size/W.LL: 1-7/8" 3500LBS 2" 5000LBS 2-5/16" 10000LBS
- Tow Hook: 10000LBS



Heavy Duty Off Road Pintle Towing Hook

TKTC-2023B-003

OEM&ODM



- Process:Welding-CNC
- Material:Carbon steel
- Surface: Powder Painted (Color customizable)
- Ball Size: 2" W.LL: 8T



NEW PRODUCTS IN 2023 SUPPORT CUSTOMIZATION

TKTC-2023C-006 Adjustable Hitch Ball Mount 4"

Aluminum Alloy



- Ball Size:2" & 2-5/16"
- Finish Type: Anodic oxidation
- Material: aluminum alloy
- Color can be customized

TKTC-2023C-007 Adjustable Hitch Ball Mount 6"

Aluminum Alloy



- Ball Size:2" & 2-5/16"
- Finish Type: Anodic oxidation
- Material: aluminum alloy
- Color can be customized

TKTC-2023C-008 Adjustable Hitch Ball Mount 8"

Aluminum Alloy



- Ball Size:2" & 2-5/16"
- Finish Type: Anodic oxidation
- Material: aluminum alloy
- Color can be customized

TKTC-2023C-008 Adjustable Hitch Ball Mount 10"

Aluminum Alloy



- Ball Size:2" & 2-5/16"
- Finish Type: Anodic oxidation
- Material: aluminum alloy
- Color can be customized

MODEL:TKTC TRAILER ACCESSORIES

NEW PRODUCTS IN 2023 SUPPORT CUSTOMIZATION

Adjustable Hitch

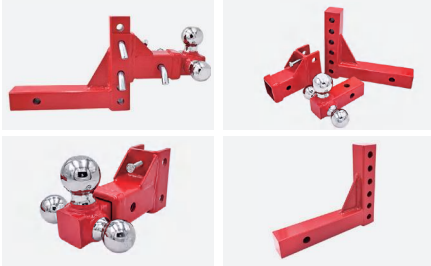
Source manufacturer quality assurance

TKTC-2023D-001

OEM&ODM



- Process:Welding-CNC
- Material:Carbon steel
- Surface Treatment:Powder coated
- Ball Size: 1-7/8" & 2" & 2-5/16"



Adjustable Hitch Ball Mount

AustraliaN CONDITIONS

TKTC-2023D-002

OEM&ODM



- Process:Welding-CNC
- Material:Carbon steel
- Surface Treatment:Powder coated
- Size: 388*245*75mm

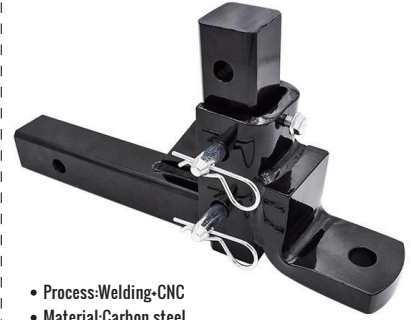


Adjustable Hitch

AustraliaN CONDITIONS

TKTC-2023D-003

OEM&ODM



- Process:Welding-CNC
- Material:Carbon steel
- Surface: Powder Painted (Color customizable)
- Size: 405*75*230mm



Trailer Accessories

NEW PRODUCTS IN 2023 SUPPORT CUSTOMIZATION

TKTC-2023E-005

Simple trailer arm



- Material : Aluminum Alloy
- Surface: Anodic oxidation
- Size: 65*49.5mm
- Logo can be customized

TKTC-2023E-006

Adjustable Hitch Ball Mount



- Ball Size:1-7/8" & 2" & 2-5/16"
- Finish Type: Powder Painted
- Material: Carbon Steel
- W.L.L.:2000/5000/10000LBS

TKTC-2023E-007

Forged Tow Eye 4 bolt holes



- Hole center distance: 113mm
- Finish Type: Powder Painted
- Material :Carbon steel
- W.L.L.:66000LBS

TKTC-2023E-008

Adjustable Lunette Ring 3" Heavy-Duty Channel



- 3" Heavy-Duty Channel
- Finish Type: Powder Painted
- Material :Carbon steel
- Logo can be customized

MODEL:TKTC TRAILER ACCESSORIES

OEM&ODM

Adjustable Hitch Ball Mount

TKTC-1017

Stamping Snatch Block finished by stamping, Hitch ball finished by forging+CNC. Surface is Powder painted (Multiple colors). OEM / ODM acceptable

- Application : Applicable to Off-road Trailer Rescue.
- The appearance and color can be customized



TKTC-1017-001 Adjustable Hitch Ball Mount

- Max Drop:7-1/2"
- Max Rise:6-1/4"
- Length:12"-13"
- Suit for 2" Hitch Tube
- OEM / ODM acceptable



TKTC-1017-002 Adjustable Hitch Ball Mount

- Max Drop:9-5/8"
- Max Rise:8-3/8"
- Length:12"-13"
- Suit for 2" Hitch Tube



TKTC-1017-003 Adjustable Hitch Ball Mount

- Max Drop:9-1/2"
- Max Rise:6-3/4"
- Length:15-3/5"
- Suit for 2" Hitch Tube



TKTC-1017-004 Tri-Ball Adjustable Trailer Hitch

- Max Drop:4-3/4"
- Max Rise:5-11/16"
- Length:11-9/16"
- Hitch Ball Size:1-7/8",2",2-5/16"



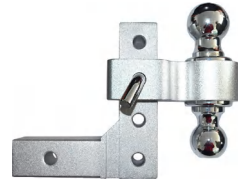
TKTC-1017-005 Adjustable Hitch Ball Mount

- Max Drop:8"
- Max Rise:6-1/4"
- Length:15"
- Hitch Ball Size:2" & 2-5/16"



TKTC-1017-006 Adjustable Hitch Ball Mount

- Max Drop:6"
- Max Rise:5-1/4"
- Length:11"-12"
- Hitch Ball Size:2" & 2-5/16"



TKTC-1017-007 Adjustable Hitch Ball Mount

- Max Drop:2"-6"
- Ball Size:2" & 2-5/16"
- Material: Aluminum Alloy
- W.L.L.5000lbs&10000lbs



TKTC-1017-008 Adjustable Hitch Ball Mount

- Max Drop:2"-6"
- Ball Size:2" & 2-5/16"
- Material: Aluminum Alloy
- OEM / ODM acceptable



TKTC-1017-009 Adjustable Eye Assembly

- Max Drop:150mm
- Max Rise:100mm
- Length:300mm
- Inner diameter of Eye:75mm

TKTC-1017-010 Hitch Ball Cover

- Size: Suit for 2" Hitch Ball
- Material:TPU
- Product process:Injection molding



MODEL:TKTC TRAILER ACCESSORIES

NEW PRODUCTS IN 2023 SUPPORT CUSTOMIZATION

Tow Bar Ball Cover-Cap

Source manufacturer quality assurance

TKTC-2023F-001

OEM&ODM



- Material: PVC
- Size: 60*57mm
- Color: Black/Yellow/Red/Blue
- Product process: Injection molding



Gas Can Oil Petrol Storage

Manufacturer direct sales

TKTC-2023F-002

OEM&ODM



- Color: Red/Black/Yellow
- Material: Made of high quality nylon plastic
- Fit: Jeep Polaris RZR ATV UTV 4x4 / Car Quad Van
- Size: 5L/ 10L/ 20L/ 30L



Hockey Puck Lock

Manufacturer direct sales

TKTC-2023F-003

OEM&ODM



- Color: Color can be customized
- Material: Stainless Steel/45# steel
- Surface: Chrome Coating (Logo can be customized)
- Size: ϕ 74mm H32/37mm



NEW PRODUCTS IN 2023 SUPPORT CUSTOMIZATION

TKTC-2023F-005

Adjustable Trailer Coupler



- Material : Carbon steel
- Surface: Powder Painted
- For 2-Inch Hitch Ball, 7,000 lbs
- Logo can be customized

TKTC-2023F-006

A-Frame Trailer Coupler



- Material : Carbon steel
- Surface: Powder Painted
- For 2-5/16Inch Hitch Ball, 12500 lbs
- Logo can be customized

TKTC-2023F-007

COUPLER LOCKS Odm



- Fit - 4x4 Off-road trailer rescue
- Surface: Powder Painted
- Material :Carbon steel
- Logo can be customized

TKTC-2023E-008

Gooseneck Coupler Lock



- Fits all gooseneck 2-5/16 style couplers
- Surface: Powder Painted
- Material :Aluminum
- Logo can be customized

MODEL:TKTC HITCH COUPLERS

OEM&ODM

COUPLER LATCH LOCKS

TKTC-1023A

- Lock hitch pin is made with high-strength steel construction;
- Galvanized, chrome, Power painted(Multiple);
- Watertight dust caps prevent internal corrosion
- Two keys included for added convenience
- OEM,ODM acceptable, retail packaging can be customized.



TKTC-1023A-001
1/4"

- Lock Pin Diameter * Latch Span:
Span1/4"(Φ);7/8"(L)



TKTC-1023A-002
1/4"

- Lock Pin Diameter * Latch Span:
Span1/4"(Φ);2-1/2"(L)



TKTC-1023A-003
1/4"

- Lock Pin Diameter * Latch Span:
Span1/4"(Φ);2-1/2"(L)



TKTC-1023A-004
1/4"

- Lock Pin Diameter * Latch Span:
Span1/4"(Φ);3-1/4"(L)

OEM,ODM acceptable, retail packaging can be customized.

OEM&ODM

TRAILER COUPLER LOCKS

TKTC-1023B

- Fit - 4x4 Off-road trailer rescue
- Preventing a trailer ball from being inserted into the coupler
- Two keys included for added convenience

TKTC-1023B-001
COUPLER LOCKS



- Size:1-7/8",2",2-5/16"

TKTC-1023B-002
COUPLER LOCKS-ODM



- Size:2", 2-5/16"

TKTC-1023B-001
COUPLER LOCKS



- OEM/ODM acceptable

TKTC-1023B-002
COUPLER LOCKS



- Size:1/4"



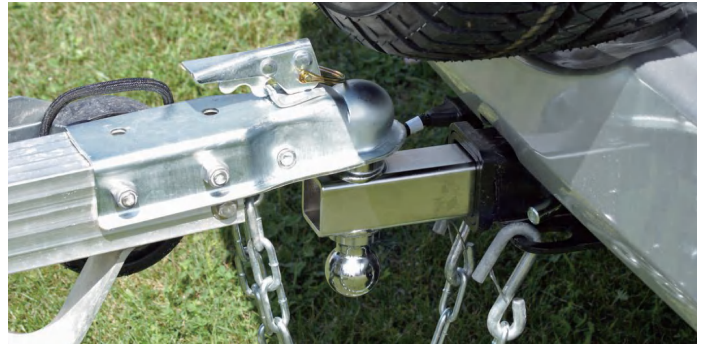
MODEL:TKTC HITCH BALL COUPLER

OEM&ODM

HITCH BALL COUPLER

TKTC-1023C

- Hitch Ball Coupler pin is made with high-strength steel construction;
- Galvanized, chrome, Power painted(Multiple);
- OEM,ODM acceptable, retail packaging can be customized.
- Fit - 4x4 Off-road trailer rescue



TKTC-1023C-001 HITCH BALL COUPLER

- Material:carbon steel
- Surface: Zinc plating/Powder Painted
- Process:stamping
- Accept OEM/ODM



TKTC-1023C-002 Straight Coupler with Safety Chain

- Material:carbon steel
- Surface: Zinc plating/Powder Painted
- Process:stamping
- Accept OEM/ODM

Ball Size(in)	Channel Size(in)	W.L.L.(lbs)	Weight(kg)
1-7/8	2	2000	1.19
1-7/8	2-1/2	2000	1.21
1-7/8	3	2000	1.26
2	2	3500	2
2	2-1/2	3500	2.1
2	3	3500	2.1
2	3	5000	2.34

Ball Size(in)	Channel Size(in)	W.L.L.(lbs)	Weight(kg)
1-7/8	2	2000	1.22
1-7/8	2-1/2	2000	1.23
1-7/8	3	2000	1.28
2	2	3500	2.1
2	2-1/2	3500	2.2
2	3	3500	2.2
2	3	5000	2.44



TKTC-1023C-003 QuickPin Couplers

- Material:carbon steel
- Surface: Zinc plating/Powder Painted
- Process:stamping
- Accept OEM/ODM

Ball Size(in)	Channel Size(in)	W.L.L.(lbs)
1-7/8	2	2000
1-7/8	2-1/2	2000
1-7/8	3	2000
2	2	3500
2	2-1/2	3500
2	3	3500



TKTC-1023C-004 A-Frame Coupler

- Material:carbon steel
- Surface: Zinc plating/Powder Painted
- Process:stamping
- Accept OEM/ODM



Ball Size(in)	Weight(kg)	W.L.L.(lbs)
2	2.98	5000



MODEL:TKTC TRAILER ACCESSORIES



TKTC-1018-003
Tow Ball 50mm

- Material: Carbon Steel
- Surface: Zinc plating/Powder Painted
- Process: Forging
- OEM / ODM acceptable



TKTC-1018-004
Land Rover Tow Bar

- Material: Carbon Steel
- Surface: Powder Painted
- Process: Forging
- OEM / ODM acceptable



TKTC-1018-005
Forged Hitch Ball Mount (Hollow)

- Material: Carbon Steel
- Surface: Zinc plating/Powder Painted
- Process: Forging
- OEM / ODM acceptable



TKTC-1018-006
Forged Hitch Ball Mount (Hollow)

- Material: Carbon Steel
- Surface: Powder Painted
- Process: Forging
- OEM / ODM acceptable

Ball Hole Size	Length	Max Rise	Max Drop
(in)			
3/4	8-3/8	3/4	1-1/4
3/4	8-1/2	1-1/2	2
3/4	8-1/2	2-1/2	3
1	8-1/2	1/2	2
1	8-1/2	1-1/2	3
1	8-3/4	2-1/2	4
1	10	3-1/2	5

Length	Ball Hole Size	Max Rise	Max Drop
(mm)			
224	22.5	122	152
224	22.5	72	102
190	22.5	21	51



Trailer Accessories



OEM&ODM

Agricultural machinery series

TKTC-1018B

- OEM / ODM acceptable



TKTC-1018B-001
3 Point Trailer Receiver



TKTC-1018B-002
Tow Eye



TKTC-1018B-003
Agricultural machinery parts



MODEL:TKTC TOW BAR



TKTC-1018C-001
Towing Hook Eye

- Material: Carbon Steel
- Surface: Zinc plating/Powder Painted
- Process: Forging
- OEM / ODM acceptable



TKTC-1018C-002
Forged Tow Eye

- Material: Carbon Steel
- Surface: Powder Painted
- Process: Forging
- OEM / ODM acceptable



TKTC-1018C-003
Forged Tow Eye

- Material: Carbon Steel
- Surface: Powder Painted
- Process: Forging
- OEM / ODM acceptable



TKTC-1018C-004
Pintle Hook Mount

- Material: Carbon Steel
- Surface: Powder Painted
- Process: Forging
- OEM / ODM acceptable



TKTC-1018C-005
Stainless Steel Adjustable Hitch Ball Mount

- Material: 304 Stainless Steel
- Surface: Chrome Painted
- Process: Forging
- OEM / ODM acceptable



TKTC-1018-008
10000LBS Tow Hook

- Material: Carbon Steel
- Surface: Powder Painted
- Process: Forging
- OEM / ODM acceptable



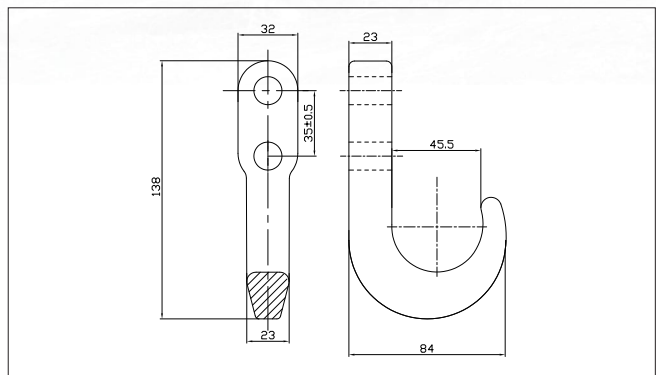
TKTC-1018C-006
Rear Seat Trailer Hitch

- Material: Carbon Steel
- Surface: Powder Painted
- Process: Forging
- OEM / ODM acceptable



TKTC-1018C-007
Farm Jack Holder

- Material: Carbon Steel
- Surface: Zinc Plating
- Process: Forging
- OEM / ODM acceptable



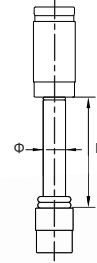
MODEL:TKTC HITCH LOCKS

OEM&ODM

1/2"Series

TKTC-1019

- Lock hitch pin is made with high-strength steel construction;
- Galvanized, chrome, Power painted(Multiple);
- Watertight dust caps prevent internal corrosion
- Two keys included for added convenience
- OEM,ODM acceptable, retail packaging can be customized.
- Silicone O-rings, holes, clips available



TKTC-1019-001

1/2" (Style1)

- Lock Pin Diameter * Latch Span:
1/2" (Φ)*2-7/8" (L)



TKTC-1019-002

1/2" (Style2)

- Lock Pin Diameter * Latch Span:
1/2" (Φ)*3-1/4" (L)



TKTC-1019-003

1/2" (Style3)

- Lock Pin Diameter * Latch Span:
1/2" (Φ)*3-1/4" (L)



TKTC-1019-004

1/2" (Style4)

- Lock Pin Diameter * Latch Span:
1/2" (Φ)*3-3/8" (L)

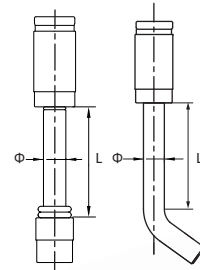
OEM,ODM acceptable, retail packaging can be customized.

OEM&ODM

5/8"Series

TKTC-1020

- Lock hitch pin is made with high-strength steel construction;
- Galvanized, chrome, Power painted(Multiple);
- Watertight dust caps prevent internal corrosion
- Two keys included for added convenience
- OEM,ODM acceptable, retail packaging can be customized.
- Silicone O-rings, holes, clips available



TKTC-1020-001

5/8" (Style1)

- Lock Pin Diameter * Latch Span:
5/8" (Φ);2-7/8" (L)



TKTC-1020-002

5/8" (Style2)

- Lock Pin Diameter * Latch Span:
5/8" (Φ);3" (L)



TKTC-1020-003

5/8" (Style3)

- Lock Pin Diameter * Latch Span:
5/8" (Φ);3" (L)



TKTC-1020-004

5/8" (Style4)

- Lock Pin Diameter * Latch Span:
5/8" (Φ);3-5/8" (L)



TKTC-1020-005

5/8" (Style5)

- Lock Pin Diameter * Latch Span:
5/8" (Φ);3-5/8" (L)



TKTC-1020-006

5/8" (Style6)

- Lock Pin Diameter * Latch Span:
5/8" (Φ);3-5/8" (L)



TKTC-1020-007

5/8" (Style7)

- Lock Pin Diameter * Latch Span:
5/8" (Φ);3-5/8" (L)



TKTC-1020-008

5/8" (Style8)

- Lock Pin Diameter * Latch Span:
5/8" (Φ);4" (L)

OEM,ODM acceptable, retail packaging can be customized.

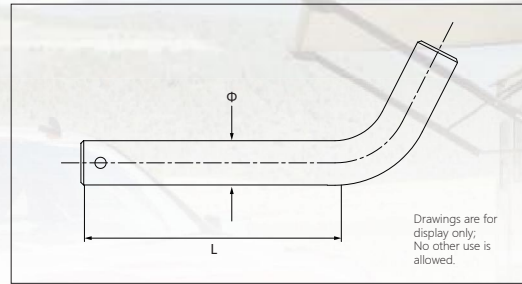
MODEL:TKTC HITCH PINS

OEM&ODM

HITCH PINS

TKTC-1021

- Hitch pin is made with high-strength steel construction;
 - Galvanized, chrome, Coated grip;
 - Secures ball mounts and other receiver tube inserts
 - Bent handle for an easier grip
 - OEM,ODM acceptable, retail packaging can be customized.
- Fit - 4x4 Off-road trailer rescue



OEM,ODM acceptable, retail packaging can be customized.

Part#	Pin Diameter(in)	Spec(in)	
		Φ	L
TKTC-1021-001	1/2	1/2	3
TKTC-1021-002	5/8	5/8	3-1/2
TKTC-1021-003	5/8	5/8	4
TKTC-1021-004	5/8	5/8	10-1/2
TKTC-1021-005	3/4	3/4	7-5/16



TKTC-1021-006
ODM(Style1)

- Lock Pin Diameter * Latch Span:
1/2"(Φ)*3-1/4"(L)



TKTC-1021-007
ODM(Style2)

- Lock Pin Diameter * Latch Span:
1/2" & 5/8"(Φ)*3-1/4"(L)

OEM,ODM acceptable, retail packaging can be customized.

OEM&ODM

Weight distribution

TKTC-1022-001

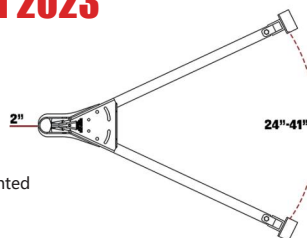
- Spec: 8000lbs,10000lbs,12000lbs
- Surface: Powder Painted
- Product Material: Carbon Steel
- Logo can be customized



NEW PRODUCTS IN 2023

Car Tow Bars TKTC-2023PH-002

- Chain length 105cm
- Ball W.L.L:5000lbs
- Surface: Zinc plating+ Powder Painted
- Product Material: Carbon Steel
- Logo can be customized



MODEL:TKTC HITCH TIGHTENER

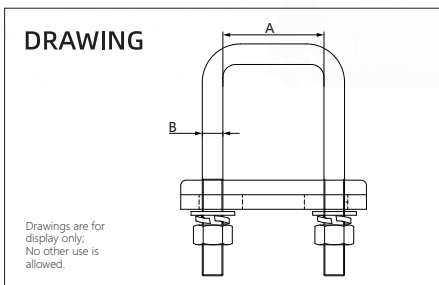
HITCH TIGHTENER SERIES

TKTC-1024 Support Customization

Made with high-strength steel construction; Galvanized, Power painted(Multiple), Coated grip; OEM& ODM acceptable, retail packaging can be customized.

OEM&ODM

- Fit - 4x4 Off-road trailer rescue
- The appearance and color can be customized



TKTC-1024-001 Hitch Tightener Style1



- Material : Carbon steel
- Measure:55.5mm(A);12mm(B)
- Size:2" / Weight:695g
- Surface: Powder Painted

TKTC-1024-002 Hitch Tightener Style2



- Material : Carbon steel
- Measure:55.5mm(A);12mm(B)
- Size:2" / Weight:679g
- Surface: Zinc Plated

TKTC-1024-003 Hitch Tightener Style3



- Material : Carbon steel
- Measure:55.5mm(A);12mm(B)
- Size:2" / Weight:695g
- Surface: Powder Painted

TKTC-1024-004 Hitch Tightener Style4



- Material : Carbon steel
- Measure:55.5mm(A);12mm(B)
- Size:2" / Weight:679g
- Surface: Zinc Plated

TKTC-1024-005 Hitch Tightener Style5



- Material : Carbon steel
- Measure:55.5mm(A);12mm(B)
- Size:2" / Weight:695g
- Surface: Powder Painted

TKTC-1024-006 Hitch Tightener Style6



- Material : Carbon steel
- Measure:55.5mm(A);12mm(B)
- Size:2" / Weight:679g
- Surface: Zinc Plated

Product use display



MODEL:TKTC PINTLE HOOKS

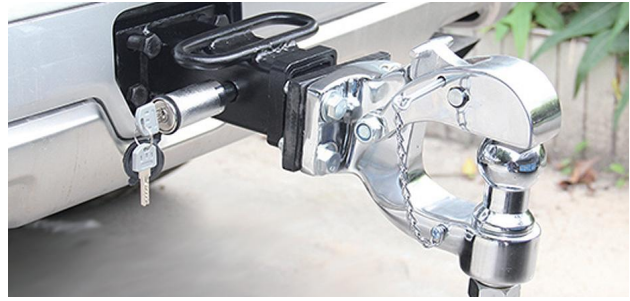
OEM&ODM

PINTLE HOOKS

TKTC-1025

Made with high-strength steel; Power painted(Multiple); OEM,ODM acceptable, retail packaging can be customized.

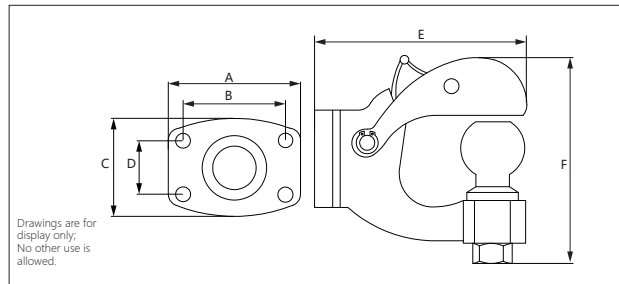
- Fit - 4x4 Off-road trailer rescue
- The appearance and color can be customized



TKTC-1025-001

Ball & Pintle Hitches

- Ball: 1-7/8" 2000lbs;
- Ball: 2" 7000lbs;
- Ball: 2-5/16" 12000lbs;
- GTW: 16000lbs;
- Body: Power painted; chrome ball



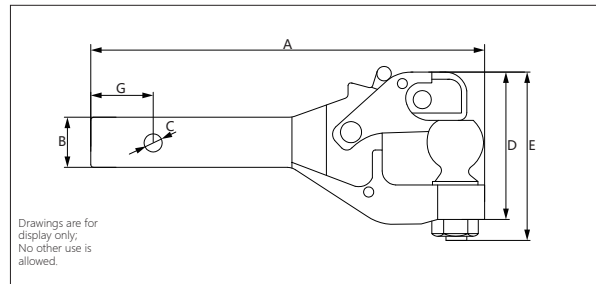
Dimension(mm)

A	B	C	D	E	F
110	85	81.8	45	177	171.8

TKTC-1025-002

Receiver-Mount Ball & Pintle H

- Ball: 1-7/8" 2000lbs;
- Ball: 2" 7000lbs;
- Ball: 2-5/16" 12000lbs;
- GTW: 12000lbs;
- Body: Power painted; chrome ball



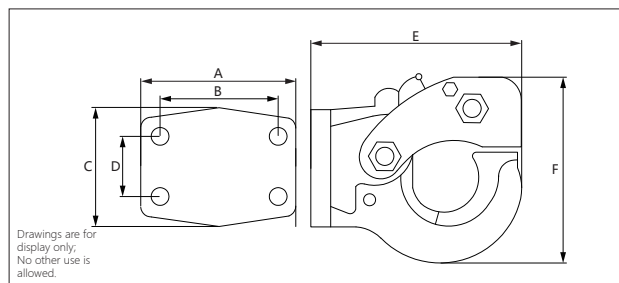
Dimension(mm)

A	B	C	D	E	G
390	50	17	152.3	171.4	62.4

TKTC-1025-003

Pintle Hooks

- Process:forging+casting
- Made with high-strength steel;
- Power painted(Multiple);
- Capacity: 5T,10T,15T;Weight:4.81(kg)



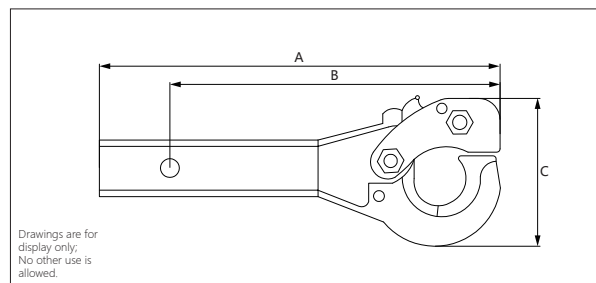
Dimension(mm)

A	B	C	D	E	F
115	85	86.4	45	156.1	137.7

TKTC-1025-004

Receiver-Mount Pintle Hooks

- Process:forging+casting
- Made with high-strength steel;
- Power painted(Multiple);
- Capacity: 5T,10T,15T;Weight:8.3(kg)



Dimension(mm)

A	B	C
370	305	137.7

MODEL:TKTC OUTDOOR OFF-ROAD

NEW PRODUCTS IN 2023 SUPPORT CUSTOMIZATION

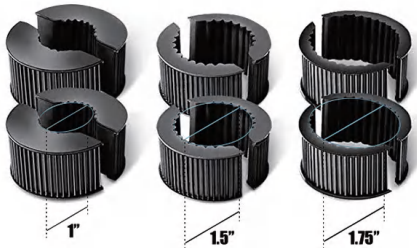
Led Light Bar Clamp Mounting Kit

TKTC-2023G-001

OEM&ODM



- Material: Rubber ,stainless steel ,Aluminum
- Diameter: 1.37"/1.5"/2"
- Color: Black
- Apply to most offroad vehicles, cars, trucks, farm vehicles, etc.



ATV WINCH

Manufacturer direct sales

TKTC-2023G-002

OEM&ODM



- Specification: 3000LB/3500LB/4000LB/4500LB/5000LB
- Rope Material: Synthetic Rope
- Fit: Jeep Polaris RZR ATV UTV 4x4 / Car Quad Van
- Motor: 12V/24V



Hand Winch

Manufacturer direct sales

TKTC-2023G-003

OEM&ODM



- Color:Color can be customized
- Material: Carbon Steel
- Surface: Zinc plated finish
- Easy-to-use one-way ratchet



NEW PRODUCTS IN 2023 SUPPORT CUSTOMIZATION

TKTC-2023G-005

Winch Mounting Plate Bracket



- Material : Carbon steel
- Surface: Powder Painted
- LxWxH: 36.61 x 8.27 x 4.72 inches
- Logo can be customized

TKTC-2023G-006

Winch Mount Bracket



- Material : Carbon steel
- Surface: Powder Painted
- Size: 325*143mm
- Support OEM&ODM Customization

TKTC-2023G-007

Hitch Step Anti Slip Style1



- Fit - 4x4 Off-road trailer rescue
- Surface: Powder Painted
- Material :Carbon steel
- Fit 2"Receiver, 23.5"Length

TKTC-2023G-008

Hitch Step Anti Slip Style1



- Fit - 4x4 Off-road trailer rescue
- Surface: Powder Painted
- Material :Carbon steel
- Fit 2"Receiver

MODEL:TKTC TRAILER ACCESSORIES

NEW PRODUCTS IN 2023 SUPPORT CUSTOMIZATION

Exhaust Air Jack Convenient For Operation TKTC-2023H-001

OEM&ODM



- Material: PVC
- Size: 68*78mm
- Color: Black/Yellow/Red/Blue
- Load Capacity: 4 tons



Easy Lift Trailer Jack Fits most floors and most trailer axles TKTC-2023H-002

OEM&ODM



- Maximum Lifting : 15 Inches
- Material: Aluminum alloy
- Minimum Height: 8 Inches
- Load Capacity: 2 tons

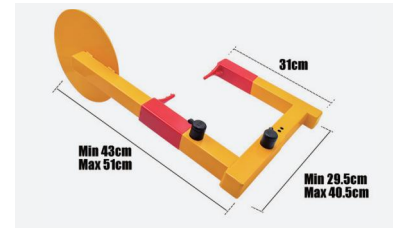


Heavy Duty Security Trailer Wheel Lock TKTC-2023H-003

OEM&ODM



- Color:Color can be customized
- Material:Carbon steel
- Surface: Powder Painted (Color customizable)
- Size: Min43(Max51)cm x 31cm x Min(Max40.5)29.5cm



NEW PRODUCTS IN 2023 SUPPORT CUSTOMIZATION

TKTC-2023H-005 Trailer Jack Wheel Heavy-Duty Swivel Mount



- Material : Carbon steel
- Surface: Plated Finish
- Load Capacity: 1500 Pounds
- Logo can be customized

TKTC-2023H-006 Trailer Jack Stand A space saver



- Material : Carbon steel
- Surface: Plated Finish
- Load Capacity: 300 Pounds
- Logo can be customized

TKTC-2023H-007 Trailer Jack Stand easy to use



- Material : Carbon steel
- Surface: Powder Painted
- Load Capacity: 2000 Pounds
- Logo can be customized

TKTC-2023H-008 Gooseneck Coupler Anti-Theft Warning Tag



- LxWxH: 7.6 x 7.6 x 8.4cm
- Surface: Powder Painted
- Material: Alloy Steel
- Logo can be customized

MODEL:TKTC WINCH ACCESSORIES



OEM&ODM

Winch Aluminum Fairlead TKTC-1031

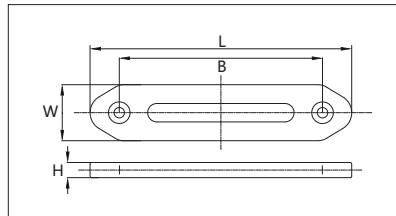
Winch Stopper TKTC-1030



- Material: Heavy-duty silicone rubber
- Center hole size: diameter 1/2 inch (12mm)
- Dimensions: 2.44 x 2.44 x 1.88 inches
- Multi-color optional. Black, Red...
- OEM/ODM Available



- Material-Aluminum
- Oxidation Treatment
- OEM/ODM Available



Part#	Weight(g)	Size L*W*H(mm)	Hole Spacing B(mm)
TKTC-1031-001	128	133*38*15	109
TKTC-1031-002	139	147*38*15	123
TKTC-1031-003	186	180*39*16	153
TKTC-1031-004	420	222*62*18	182
TKTC-1031-005	460	243*62*18	204
TKTC-1031-006	548	297*62*18	254
TKTC-1031-007	660	300*70*19	254
TKTC-1031-008	760	297*88*18	254
TKTC-1031-009	963	298*90*20	254
TKTC-1031-010	1480	300*105*30	254
TKTC-1031-011	1620	335*145*23	254
TKTC-1031-012	2000	310*140*30	254

MODEL:TKTC WINCH ACCESSORIES



TKTC-1032-001 Roller Fairlead

Factory direct sales



- Material: carbon steel
- Surface Treatment: Galvanized/Powder coated
- Accept OEM/ODM
- Surface color can be customized

NO.	Size(lb)	Dimension(mm)			Distance between rollers(mm)	Hole Spacing
		L	W	H		
TKTC-1032-001	2000-4000	126	70	44	12	110(mm)
TKTC-1032-002	4500	161	70	55	12	124(mm)
TKTC-1032-003	5000	190	70	55	12	156(mm)
TKTC-1032-004	6000	227	81	62	13	202(mm)
TKTC-1032-005	12000	298	118	90	15	254(mm)

Roller Fairlead License Plate Mount

NEW PRODUCTS IN 2023

TKTC-1032-002

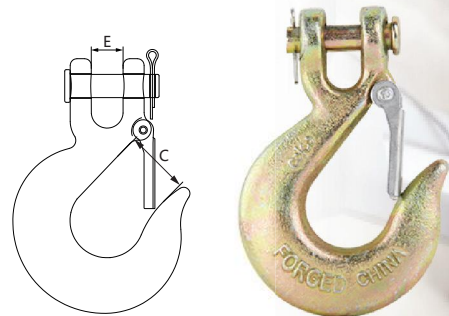
OEM&ODM

- Material: Carbon steel
- Surface Treatment: Powder coated
- Accept OEM/ODM
- Surface color can be customized



TKTC-1033-001 Clevis Slip Hook with Latch

- Material: Alloy Steel
- Surface Treatment: Galvanized/Powder coated
- OEM/ODM Available



Size (in)	Dimension (mm)		W.L.L.(T)
	E	C	
5/16	12.7	23.6	1.95
3/8	14.5	28.9	2.38

MODEL:TKTC WINCH ACCESSORIES

OEM&ODM

OEM/ODM Winch Hooks TKTC-1032-002



OEM&ODM

Winch Thimbles TKTC-1034A

- Material:carbon steel/stainless
- Surface Treatment:zinc plated/powder coated
- Accept OEM/ODM



OEM&ODM

Winch Thimbles TKTC-1035B

- Material:carbon steel/stainless
- Surface Treatment:zinc plated/powder coated
- Accept OEM/ODM



MODEL:TKTC WINCH ACCESSORIES



Winch Dampeners TKTC-1036

OEM&ODM



- Material-PVC
- Size-45x45cm, 50x50cm
- Colors, Logo, Sizes, Retail packaging can be Customized

TKTC-1037 Synthetic Ropes

OEM&ODM



- Material-High Quality polyethylene
- Colors, Logo, Sizes, Retail packaging can be Customized

Size	Breaking Strength (T)
8mm*15m	6
9mm*30m	7.2
10mm*30m	9.4
11mm*28m	11
12mm*28m	12
12mm*25m	12
13mm*25m	14
5mm*15m	2.3
6mm*15m	3.3
7mm*15m	4.2
7mm*12m	4.2

TKTC-1038 Kinetic Ropes



- Material-Nylon
- Colors, Logo, Sizes, Retail packaging can be Customized

Size	Breaking Strength (kg)
19mm*6m	8300
19mm*9m	8300
22mm*6m	10800
22mm*9m	10800
25mm*6m	13800
25mm*9m	13800



MODEL:TKTC OUTDOOR OFF-ROAD

TRACTION BOARDS

TKTC-1039

Material: High Quality polyethylene Nylon material has advantages of toughness,tensile strength, compressive strength, anti-fatigue, anit-corrosion.thermosta bility and UV resistance.Heavy Duty and UV Resistant.Anti-tarnishing.

Loading capacity: Sand / snow / mud grips on underside of track for non-slip applications Can accommodate vehicles up to 10 tons.Bottom bending-proof ,cruci form grip ground design makes the product more firm, more solid in ground gripping.Multi-color optional.Red, Black, Orange, Blue, customized...

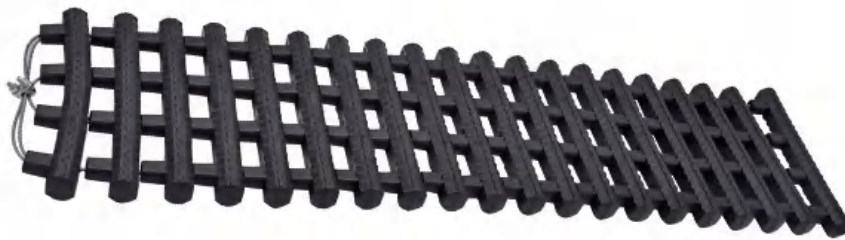


Trailer Accessories

NEW PRODUCTS IN 2023 SUPPORT CUSTOMIZATION

TKTC-1039-005

- Product width: 22cm
- Material: TPE materials
- Specification: 60/80/100/120/150cm
- LOGO can be customized



TKTC-1039-001
Traction board 001
Outdoor off-road



- Weight:4kg
- Size:950*280*50mm
- Multi:color optional.
- LOGO can be customized

TKTC-1039-002
Traction board 002
Outdoor off-road

HOT



- Weight:6kg
- Size:1050*300*60mm
- Multi:color optional.
- LOGO can be customized

TKTC-1039-003
Traction board 003
Outdoor off-road



- Weight:6kg
- Size:1140*300*60mm
- Multi:color optional.
- LOGO can be customized

TKTC-1039-004
Traction board 004
Outdoor off-road



- Weight:2.24kg
- Size:575*305*53mm
- Multi:color optional.
- LOGO can be customized

MODEL:TKTC TRAILER ACCESSORIES

OEM&ODM

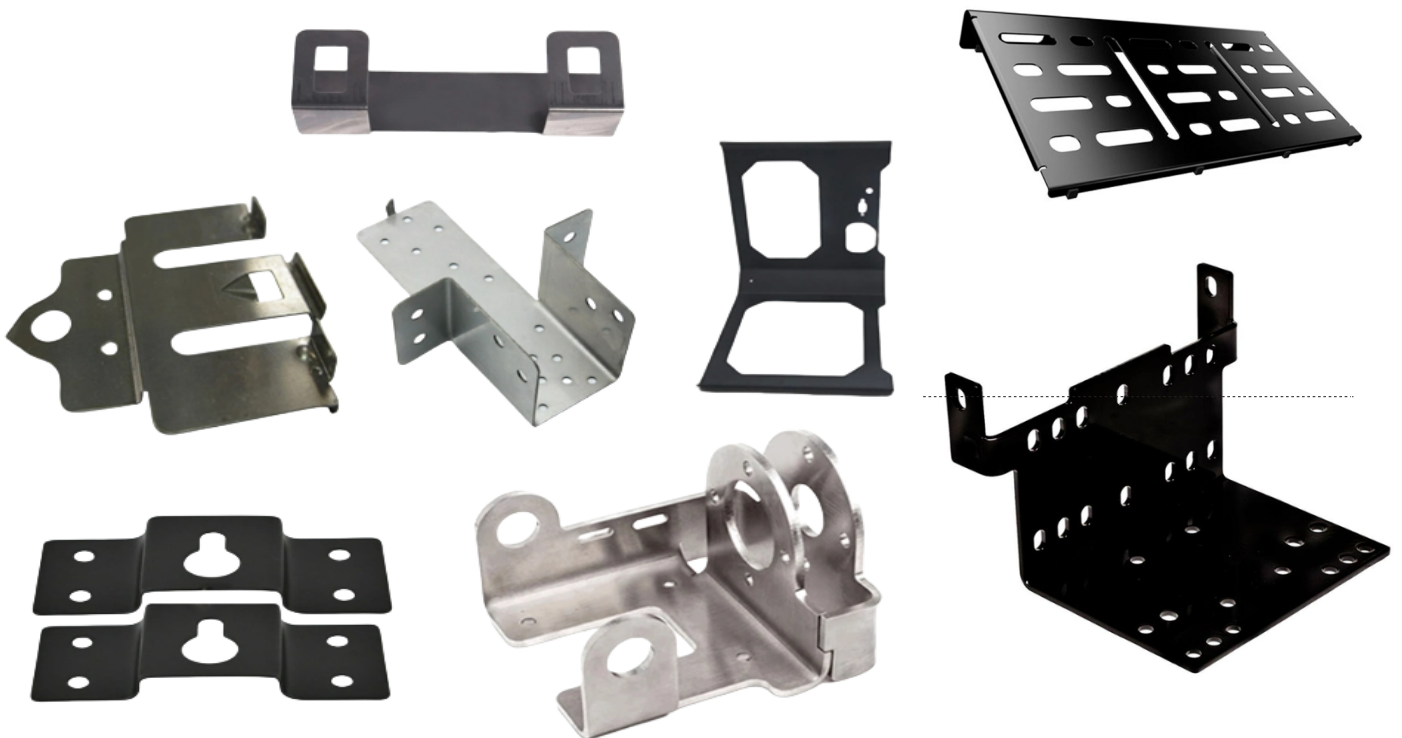
Farm Jack TKTC-1040

- Material: Steel
- W.L.L 3000kgs
- Fit - 4x4 Off-road trailer rescue

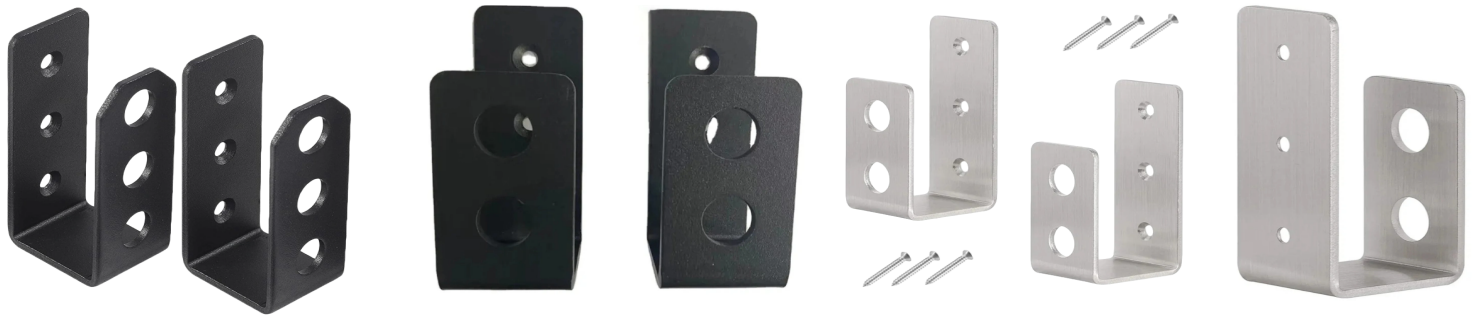


Part#	Size (in)	Min.H(mm)	Max.H(mm)	Weight(kg)
TKTC-1040-001	20	130	330	9
TKTC-1040-002	33	130	645	10.5
TKTC-1040-003	48	130	1045	12.5
TKTC-1040-004	48	115	1289	16.5
TKTC-1040-005	60	130	1320	14

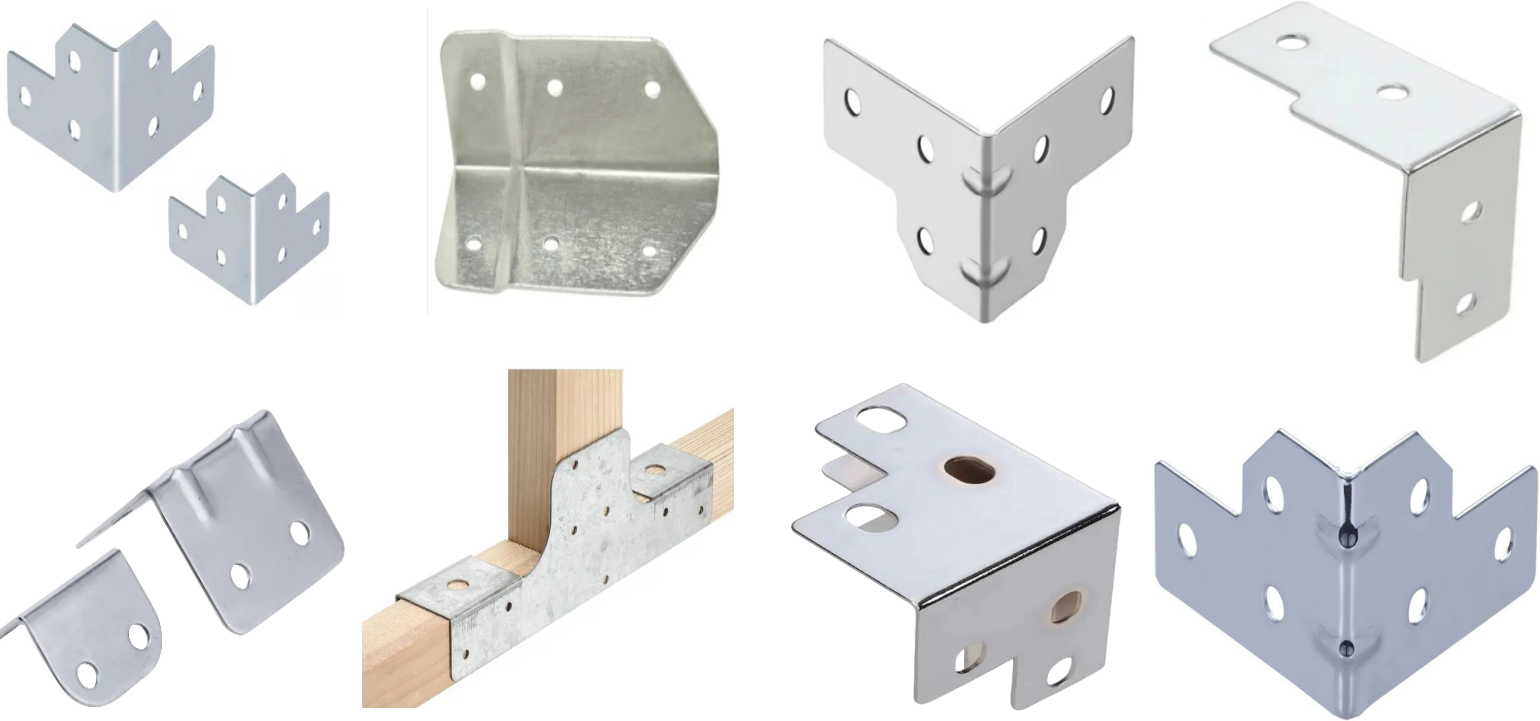
Trailer Accessories



Metal Sheet Parts



OEM U-Shape Black Powder Coated Steel Interior Exterior Door Lock Barricade Brackets



OEM Hot Sale Outdoor Wooden Building Construction L Shape Connectors with Holes



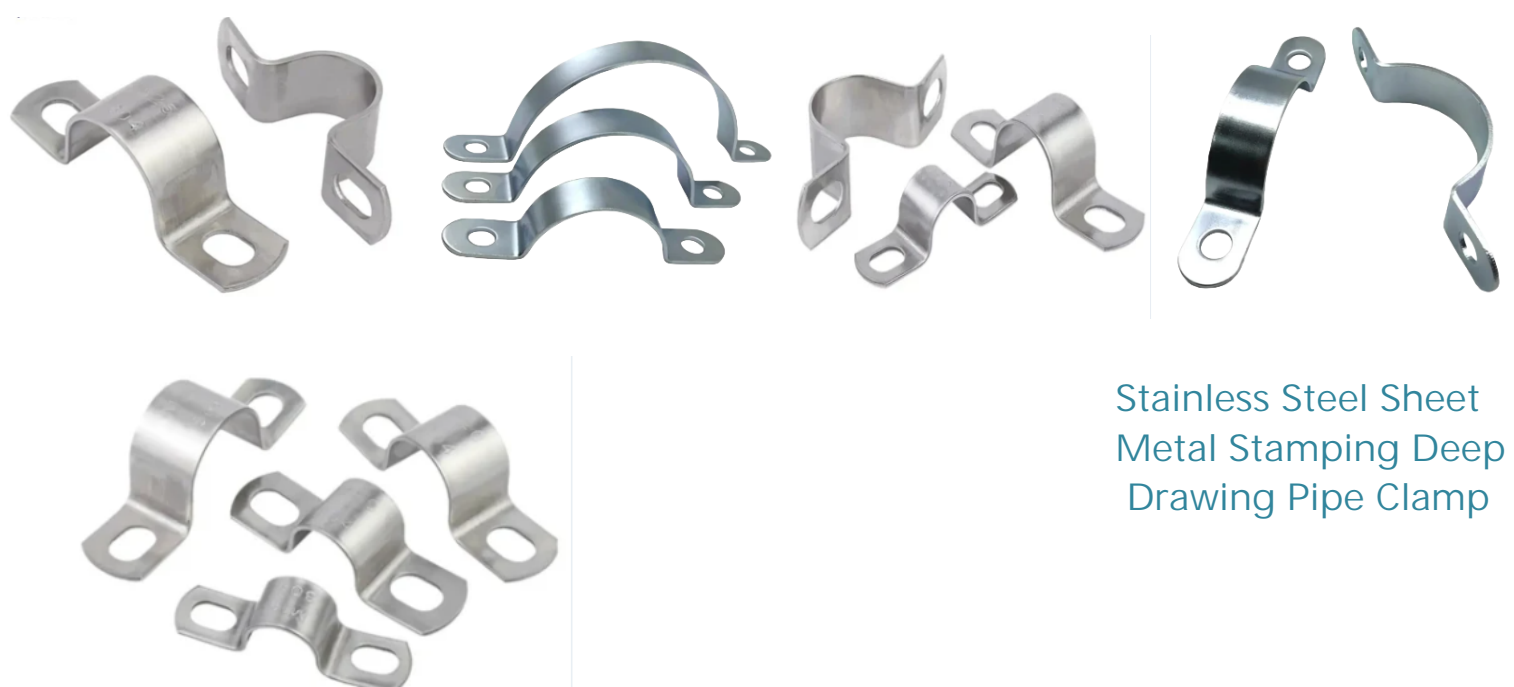
High Quality Aluminum Alloy CCTV Security Camera Wall Mount Bracket



Heavy Duty Stainless Steel Single Pipe
Elastic Hose Clamp Strong Pipe Hoop



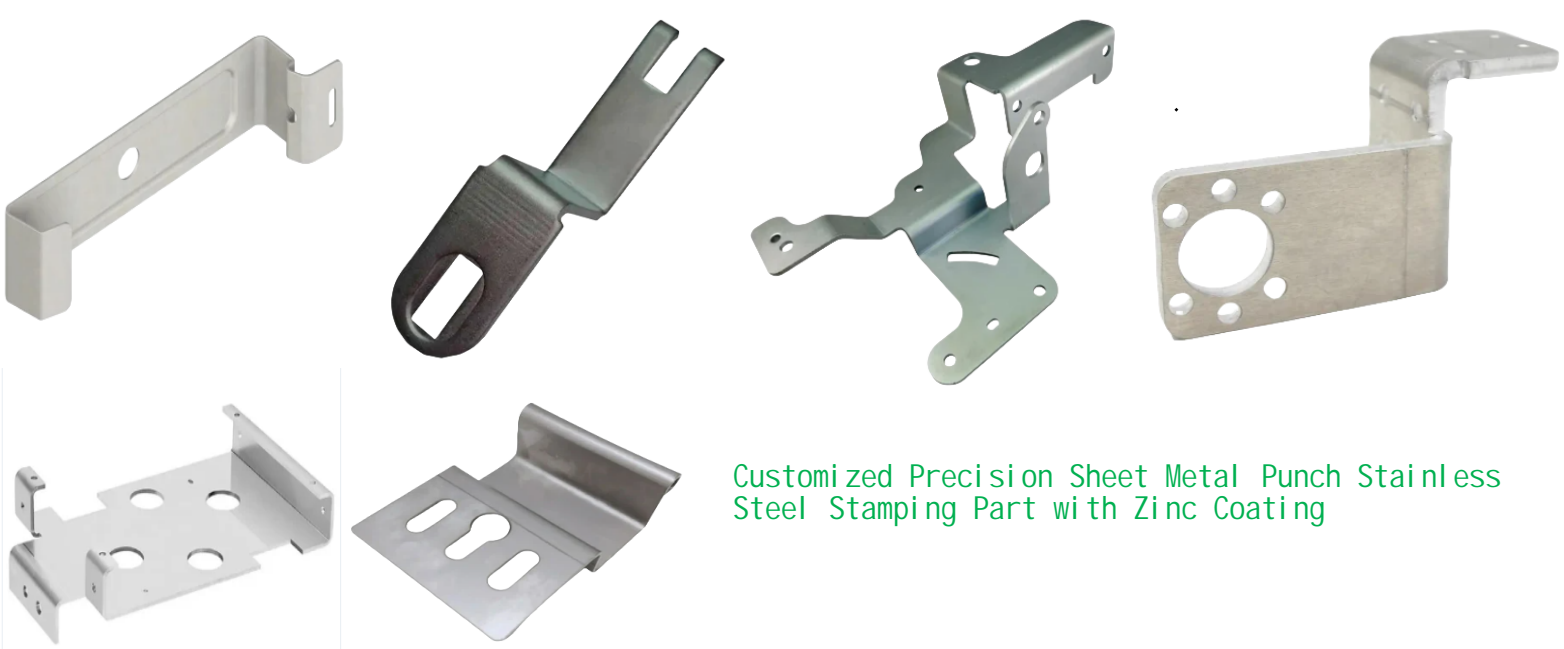
Metal Sheet Steel Plate Pipe Lifting Clamp



Stainless Steel Sheet
Metal Stamping Deep
Drawing Pipe Clamp



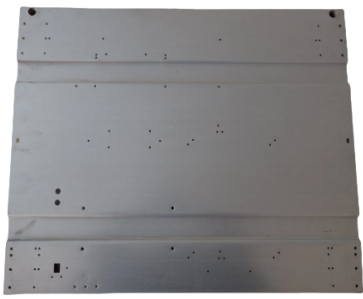
Stainless Steel Strong Hose Clamps
Metal Clamps From Pipe Fitting



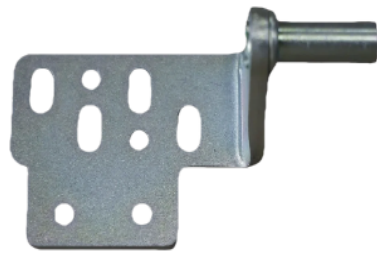
Customized Precision Sheet Metal Punch Stainless
Steel Stamping Part with Zinc Coating



OEM Stainless Steel Sheet Metal Fabrication
Stamping Parts for Auto Spare Parts



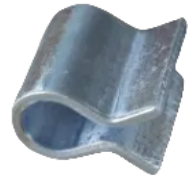
Custom Punched Grooves Galvanized Steel Bottom Plate of Freezer Press Metal Stamping



Custom Punched Grooves Galvanized Steel Bottom Plate of Freezer Press Metal Stamping



Custom Punched Grooves Galvanized Steel Bottom Plate of Freezer Press Metal Stamping



Custom Trailer Accessories Connector Ball Cover Handle Precision Parts Metal Stamping



Custom Injection Plastic Parts Ball Arm Tightener RV Trailer Tabilizer Stamping



Custom Nos Mlm Puch Swingarm Back Rocker Arm Rear Mounting Plate Stamping



Costom Ball Bowl Auto Parts Punch Stainless Steel Machinery Precision Part Stamping



Cast iron part

